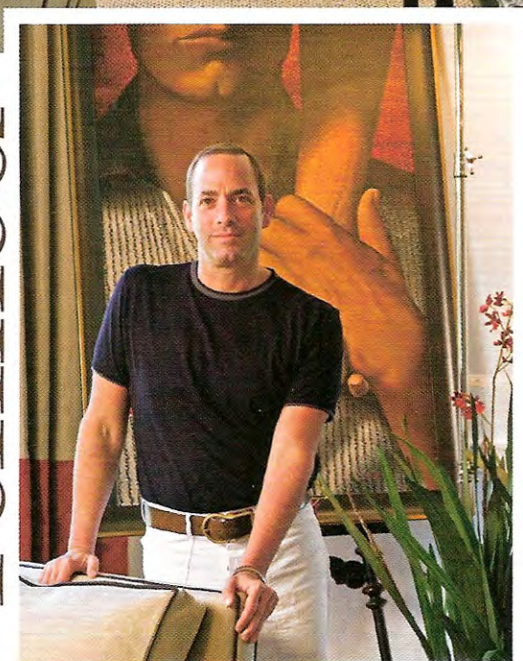




refined



Keith Baltimore

Mansions & Millionaires

Lloyd Neck, Long Island

To interior designers, an empty room is a laboratory for testing great design. For Keith Baltimore, interesting furniture ensembles and a modern approach solved the dilemma posed by the cavernous space of a traditional living room with classic architecture. "Scale is important in every room but must be played with especially carefully in a large space," says Keith. "There were tricks I used in this space to make a statement about geometry and scale."

To ensure the picturesque views through the windows wouldn't be obstructed, Keith picked tailored furniture with low backs for the large space. Three matching 90-inch-long sofas upholstered in natural-colored linen and piped in contrasting chocolate brown play off the dramatic red sateen accent at the bottom of the drapery panels. Furniture ensembles similar in scale and style but incorporating different shapes are grouped at either end of the room: A pair of chaise longues in linen fabric that matches the sofa rest on either side of a long marble-topped coffee table. Both furniture arrangements are defined by textural sisal rugs, one positioned on the diagonal. ▶



Keith Baltimore

There are plenty of opportunities for bold surprises in a room, but designer Keith Baltimore prefers to create interest with a twist on subtle, classic details. "With the large scale of this room, oversized furnishings to fill the space would have been expected," says Keith. "Instead, I played with the lines of the fabric and kept the furniture simple so the fabric could get the attention."

Beyond the exaggerated drapery hems, injections of red pop up throughout the room, tying elements together. Atop the intricately molded fireplace mantel, a row of silver mercury glass vases containing small bunches of red roses are simple in concept but deep in graphic impact. A small round mirror backed by a starburst-studded grid frame and a pair of tall silver floor lamps enhance the sparkle of the glass vases. A bird sculpture in ruby alights in front of the fireplace, and plates of the same deep shade hang totem-style between windows. Near the door frame, two side chairs with delicate carving on their backs flank a Chinese-inspired stainless console table base where a painted black wood box rests.

"The repeated red forms give the idea of rhythm and motion," explains Keith. "Especially with a large room, you want people to get constant reminders of what the entire space is about all the way through." ■

Produced by Bonnie Maharam Photographs by Bruce Buck

For more information, see sources on page 210

